



www.orpack.ru

Specifications

Reel for copper wire with enamel insulation
and metal wire

K-250 A



Specifications:

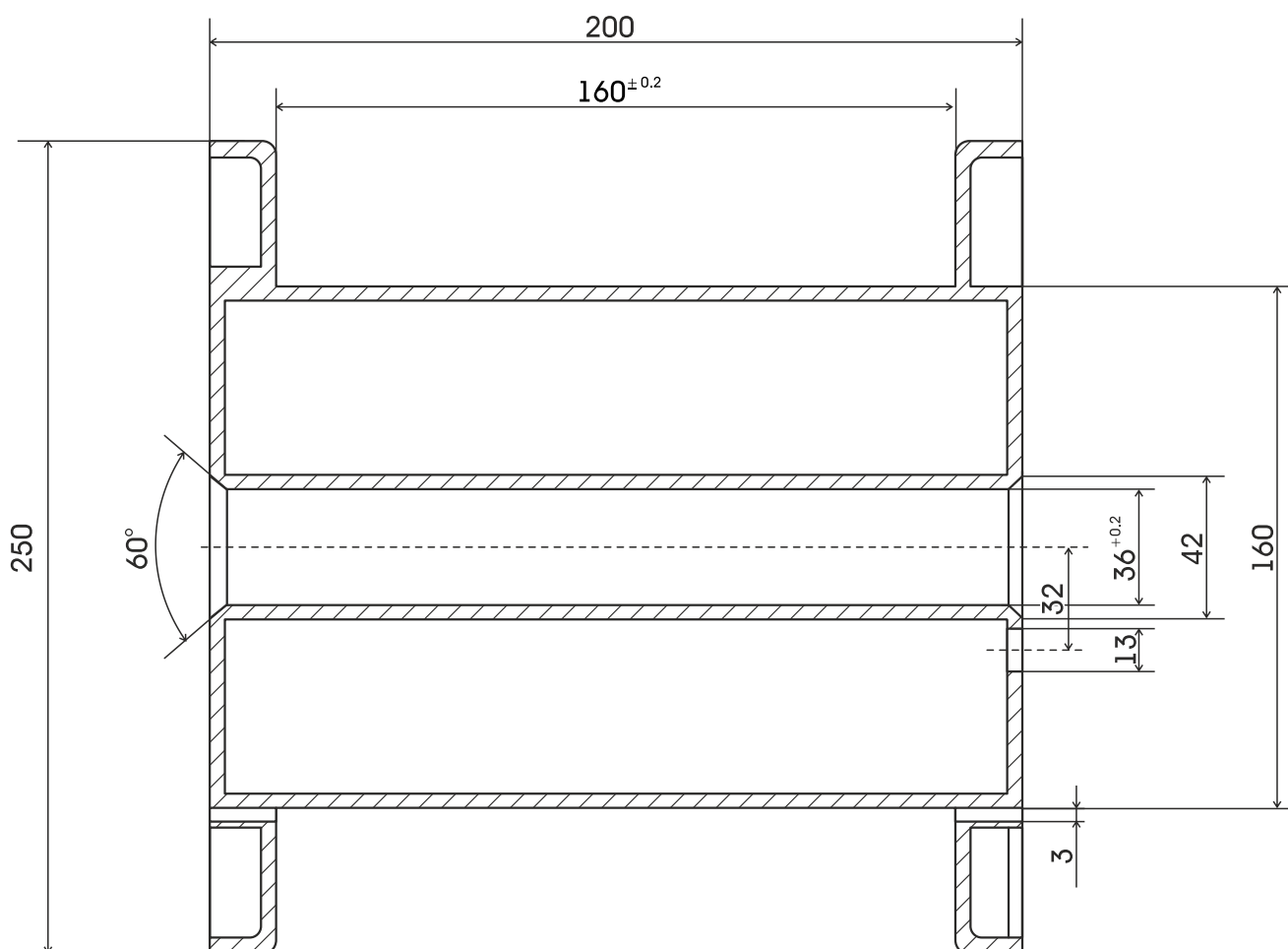
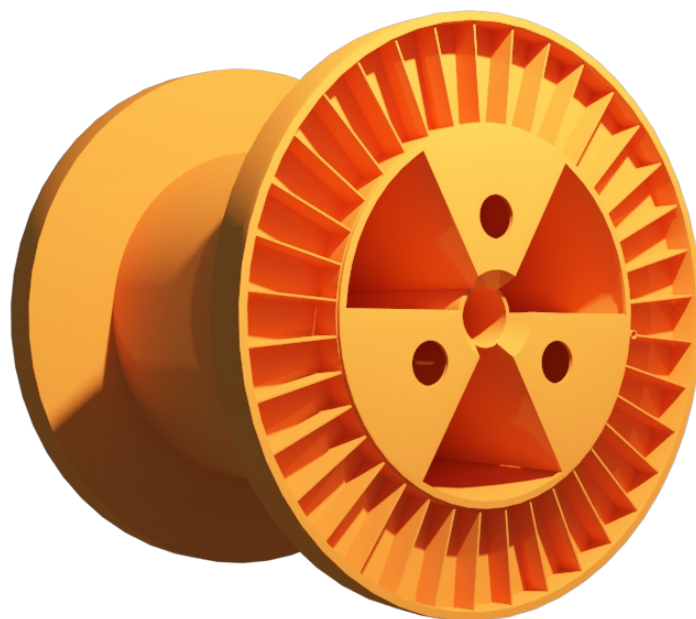
Cylindrical reel K-250
A for copper wire with enamel insulation
and metal wire

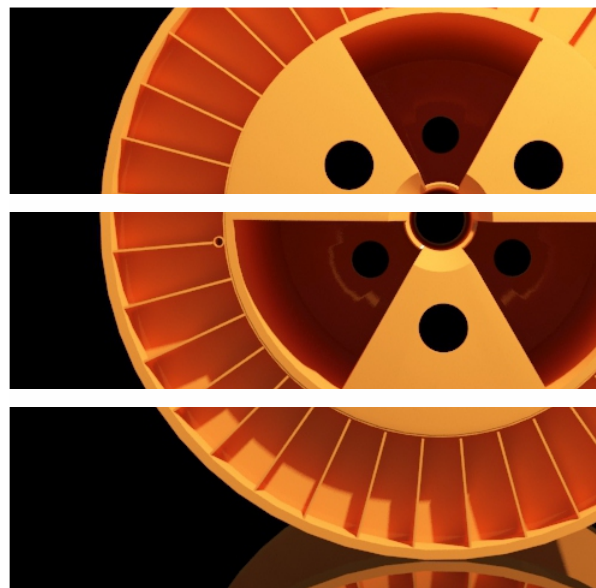
Material - HIPS; ABS; PP.

Weight - 1370 g

Quantity on pallet - 275 pcs.

Charge dimensions - 1.20 x 1.20 x 2.45 m.





ООО «ОРПАСТ»

302019, РФ, г. Орёл, ул. Веселая, д.1

тел./факс: +7 (4862) 47-42-20

тел./факс: +7 (4862) 43-26-77

тел.: +7 (4862) 43-19-20

info@orpack.ru